

MX-4620-G00

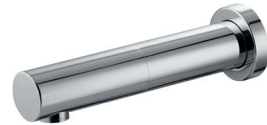
Product Information

Type: Sensor tap

Item code: MX-4620-G00

Material: Brass

Dimension: $\phi 60 \times 230$ mm (Tap)
110 x 52 x 34 mm (Transformer)



Additional Details

Working water pressure: 0.05 - 0.5 mpa

Sensing distance: 15 - 30 cm

Water running time: 30 +/- 5 seconds

Standard flow rate: 3.8 - 4.2L / min

Optional: Can add 2L flow restrictor

Guide specification:

Wall mounted sensor tap (cold water only)
with IP68 transformer complies with WELS
Grade 1.



Line drawing

